

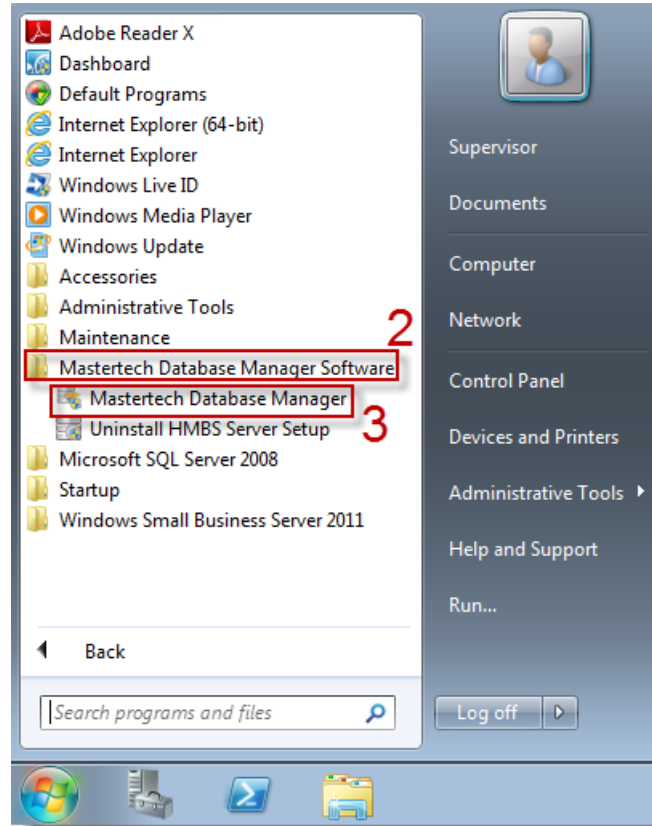
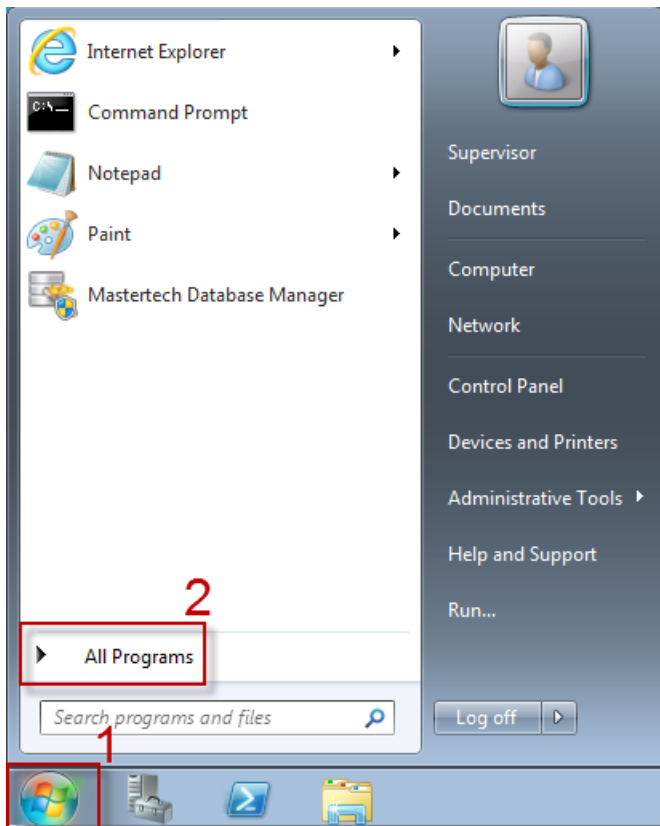
HOW TO TRANSFER A MBS3 DATABASE from one database server to another.

Part I: Originator - Preparing and sending the MBS3 data file.

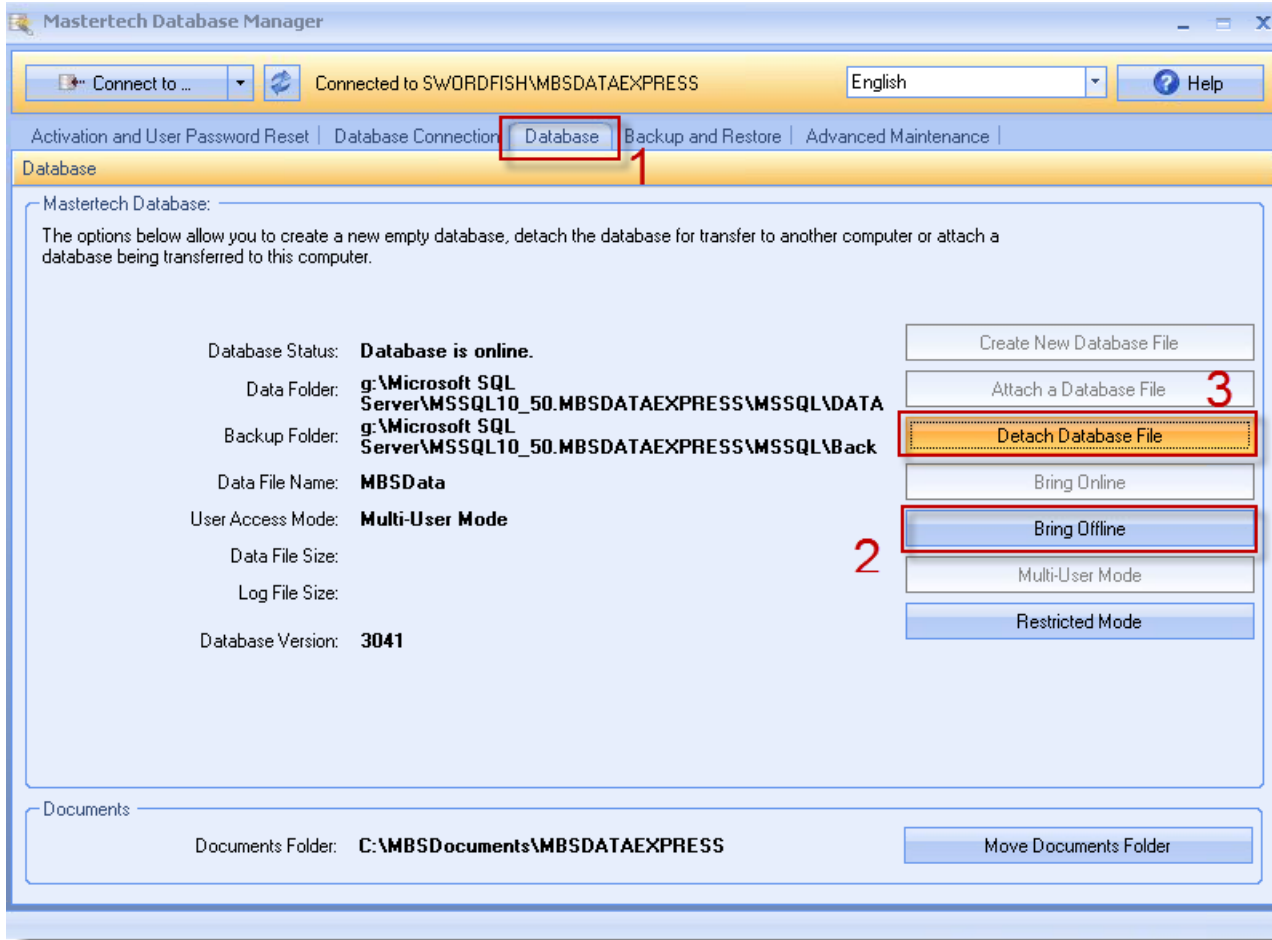
1) On the original machine, open the **MasterTech Database Manager**. You could use the desktop icon if you have one



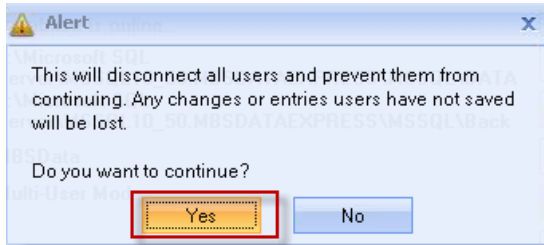
or click on **START**, then on **All Programs**, then on **MasterTech Database Manager Software**, then on **MasterTech Database Manager**.



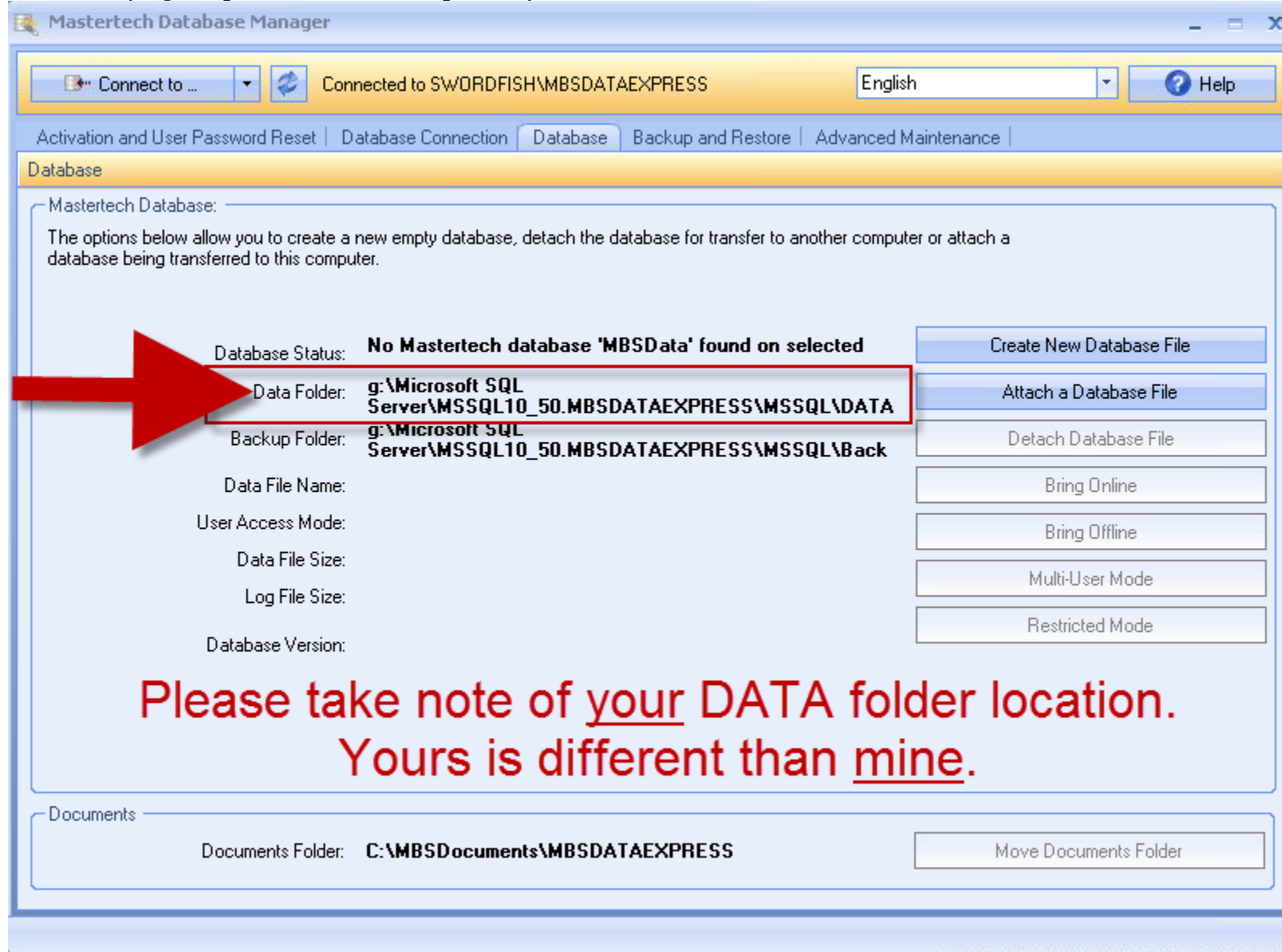
2) In the MasterTech Database Manager, select the **Database** tab. Click on **Bring Offline** button. Then click on **Detach Database File**.



Confirm with a **YES** each time.



Before carrying on, please take note the path of your database:



Mastertech Database Manager

Connected to SWORDFISH\MBSDATAEXPRESS

English

Help

Activation and User Password Reset | Database Connection | Database | Backup and Restore | Advanced Maintenance

Database

Mastertech Database:

The options below allow you to create a new empty database, detach the database for transfer to another computer or attach a database being transferred to this computer.

Database Status: **No Mastertech database 'MBSData' found on selected**

Data Folder: **g:\Microsoft SQL Server\MSSQL10_50.MBSDATAEXPRESS\MSSQL\DATA**

Backup Folder: **g:\Microsoft SQL Server\MSSQL10_50.MBSDATAEXPRESS\MSSQL\Back**

Data File Name:

User Access Mode:

Data File Size:

Log File Size:

Database Version:

Create New Database File

Attach a Database File

Detach Database File

Bring Online

Bring Offline

Multi-User Mode

Restricted Mode

**Please take note of your DATA folder location.
Yours is different than mine.**

Documents

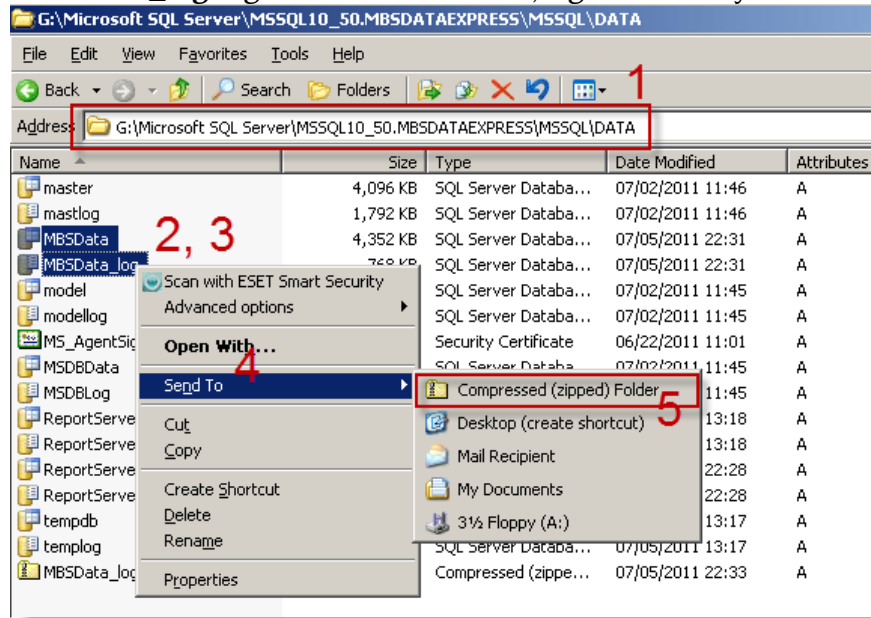
Documents Folder: **C:\MBSDocuments\MBSDATAEXPRESS**

Move Documents Folder

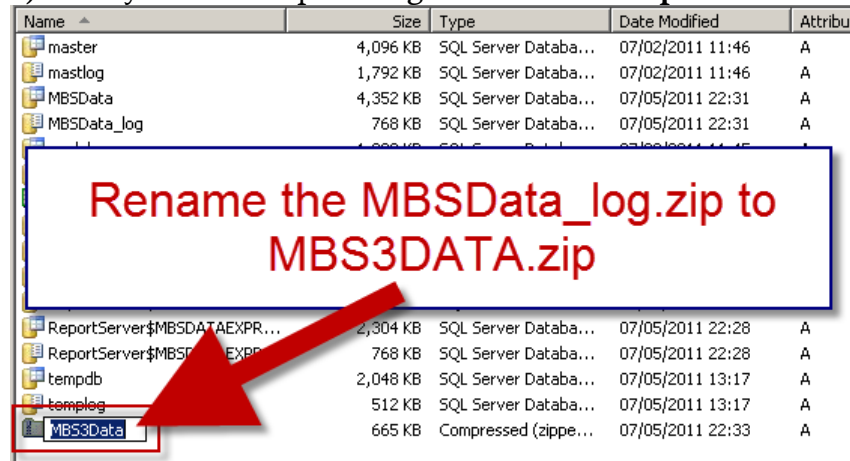
By default the path would be: C:\Program Files\Microsoft SQL Server\MSSQL10_50.MBSDATAEXPRESS\MSSQL\DATA

3) Using your **Windows Explorer**, drill into the data folder using the path found in the step just before. Select the files **MBSData** and

MBSData_log together. Once selected, right click on your selection, go to **Send To** and select **Compressed (Zipped) Folder**.



4) Then your next step is to right click on the **.zip** file and select **Rename** and rename the **.zip** file to **MBS3DATA(.zip)**.

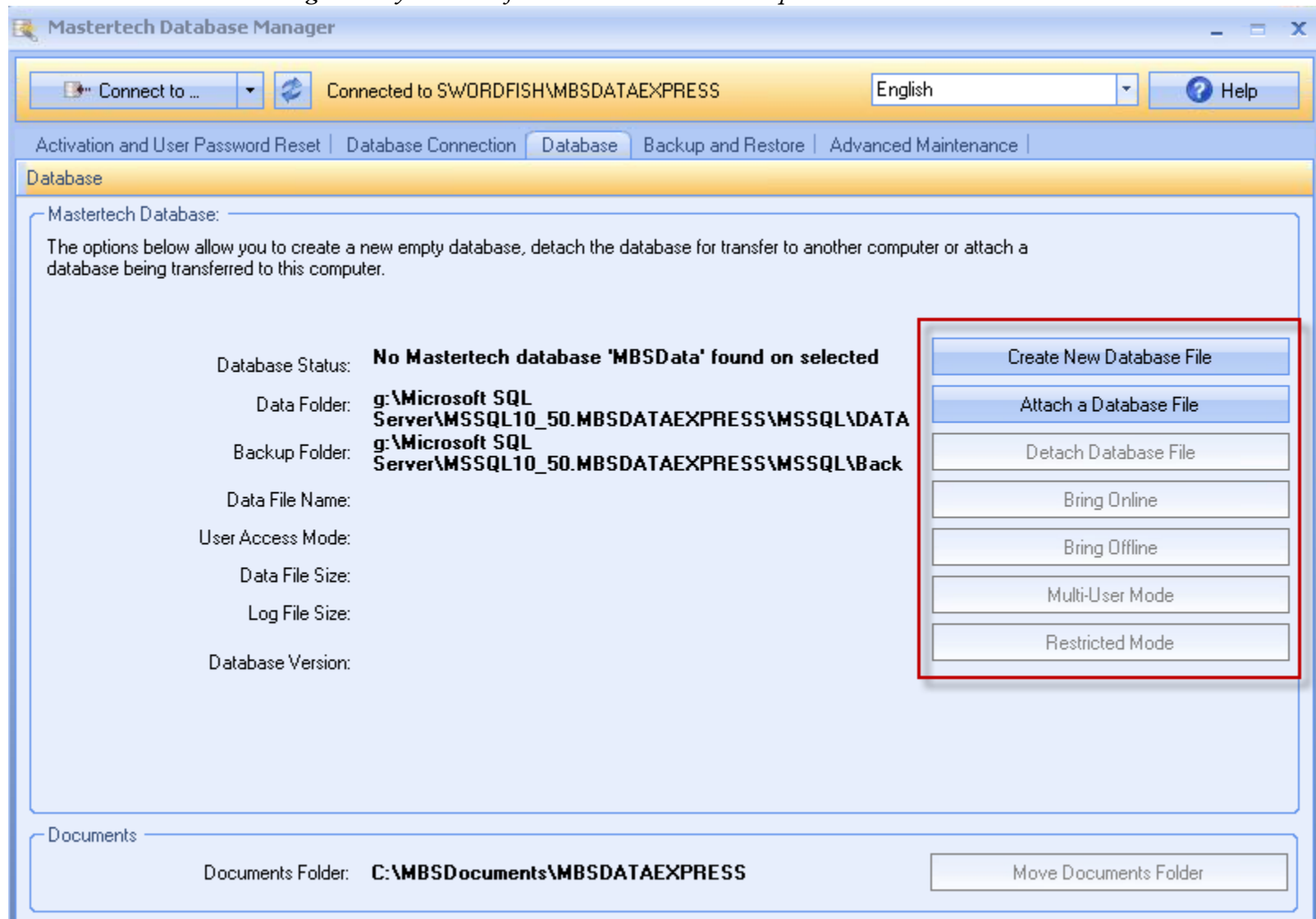


5) Attach the **MBS3DATA(.zip)** file to an email and send it to the recipient.

6) At this point, to resume the use of this database on the original machine, you would need to re-attach the database file so it goes online. You could read the instructions on how to re-attach on **Part II: Recipient**, step 3), 4) and 5). Otherwise the database will remain detached.

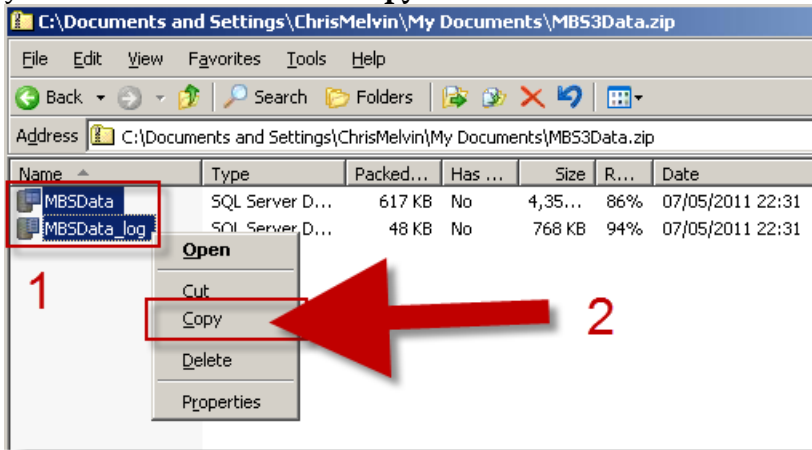
Part II: Recipient - Receiving and deploying the MBS3 data file.

1) On the recipient machine, detach the current and active database file. Repeat step 1) and 2) of **Part I: Originator** and you will see a screen like this. *There should no longer be any database file selected or in use at this point.*

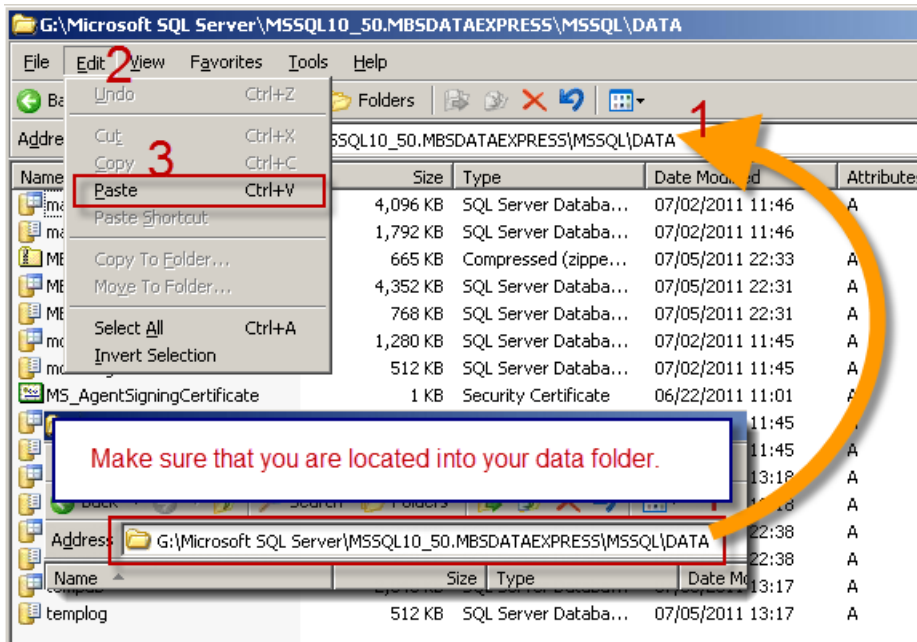


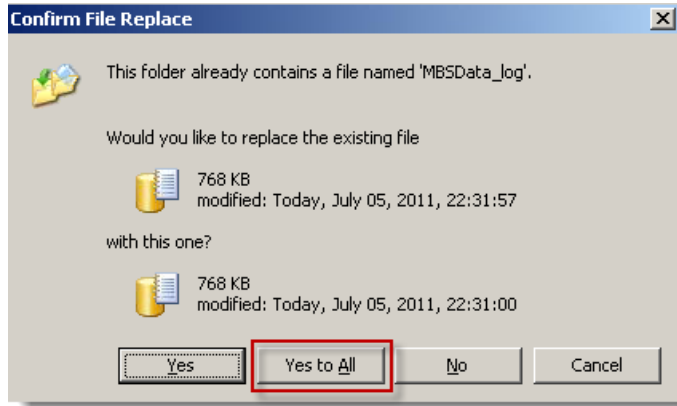
Like in **Part I: Originator**, step 2), please note the path of your data folder. By default the path would be: **C:\Program Files\Microsoft SQL Server\MSSQL10_50.MBSDATAEXPRESS\MSSQL\DATA**

2) From the email you received from the original machine, save the **MBS3Data.zip** file in your **My Document** folder. In the **My Document** folder, double-click on the icon of the **.zip** file to open it. Select the files **MBSData** and **MBSData_log** together. Once selected, right click on your selection and select **Copy**.



3) Using the path noted in the step before, use **Windows Explorer**, drill to the location of your **Data** folder. By default the path would be: **C:\Program Files\Microsoft SQL Server\MSSQL10_50.MBSDATAEXPRESS\MSSQL\DATA**, click on the word **Edit** in the menu bar and select **Paste**.

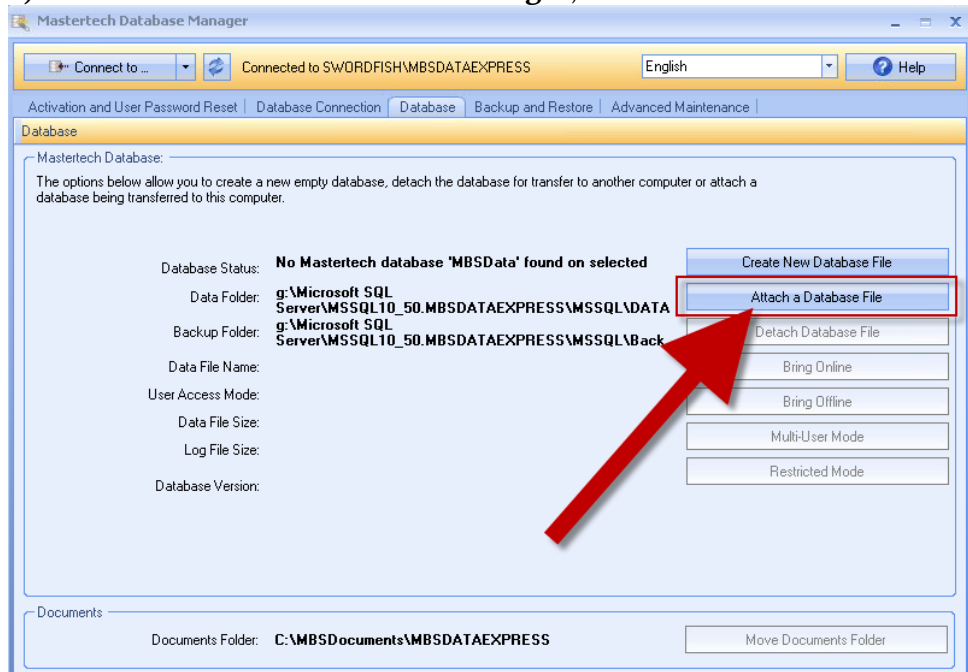




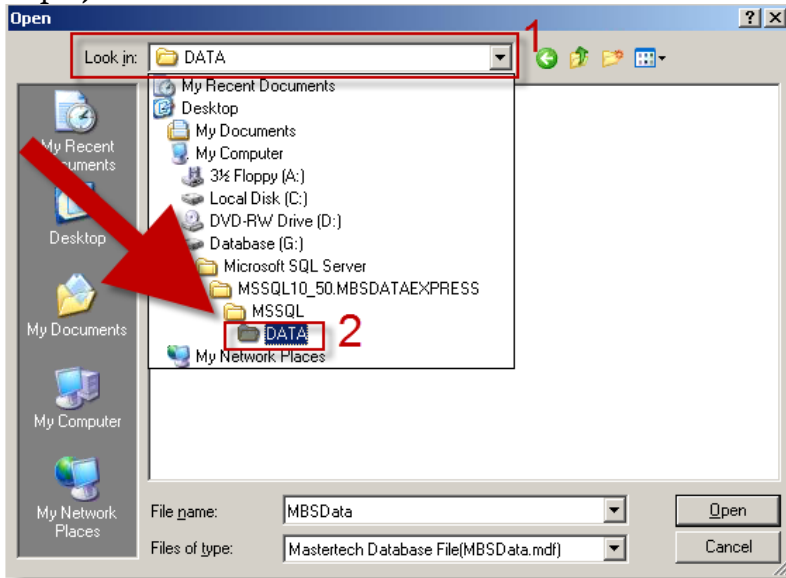
This will trigger a message asking you if you want to overwrite your current and existing **MBSData** and **MBSData_log** files. Click on **Yes to All** to overwrite the existing files.

IMPORTANT NOTE: Once you've overwritten the current and existing database file, their content will no longer be available to the user. Only the content of the new database file will be available. Though the MasterTech Database Manager makes an automated backup every week by default of your data, if you want to keep the current and existing database file before you overwrite it with the incoming one, **copy/paste** both the current and existing **MBSData** and **MBSData_log** files to another location of your choice and then complete step 2) above so you now have the copy of database from the originator.

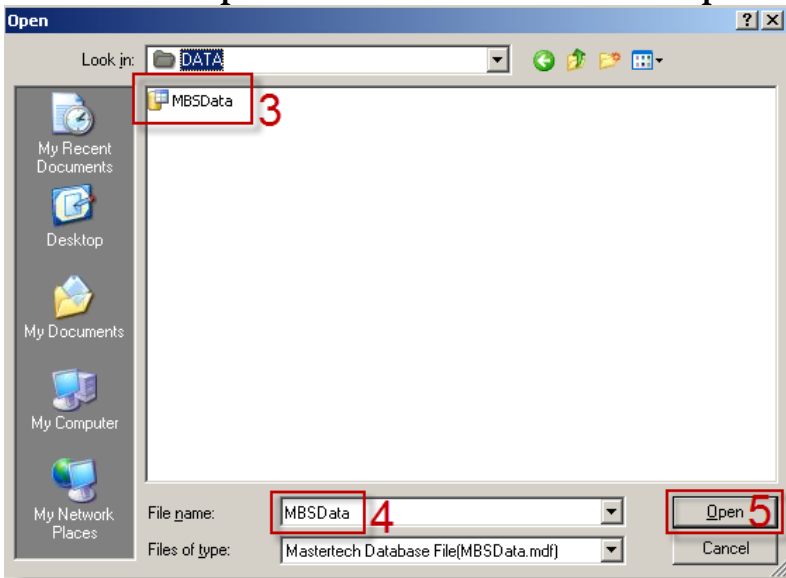
3) In the **MasterTech Database Manager**, click on the tab **Database** and click on **Attach a Database File**.



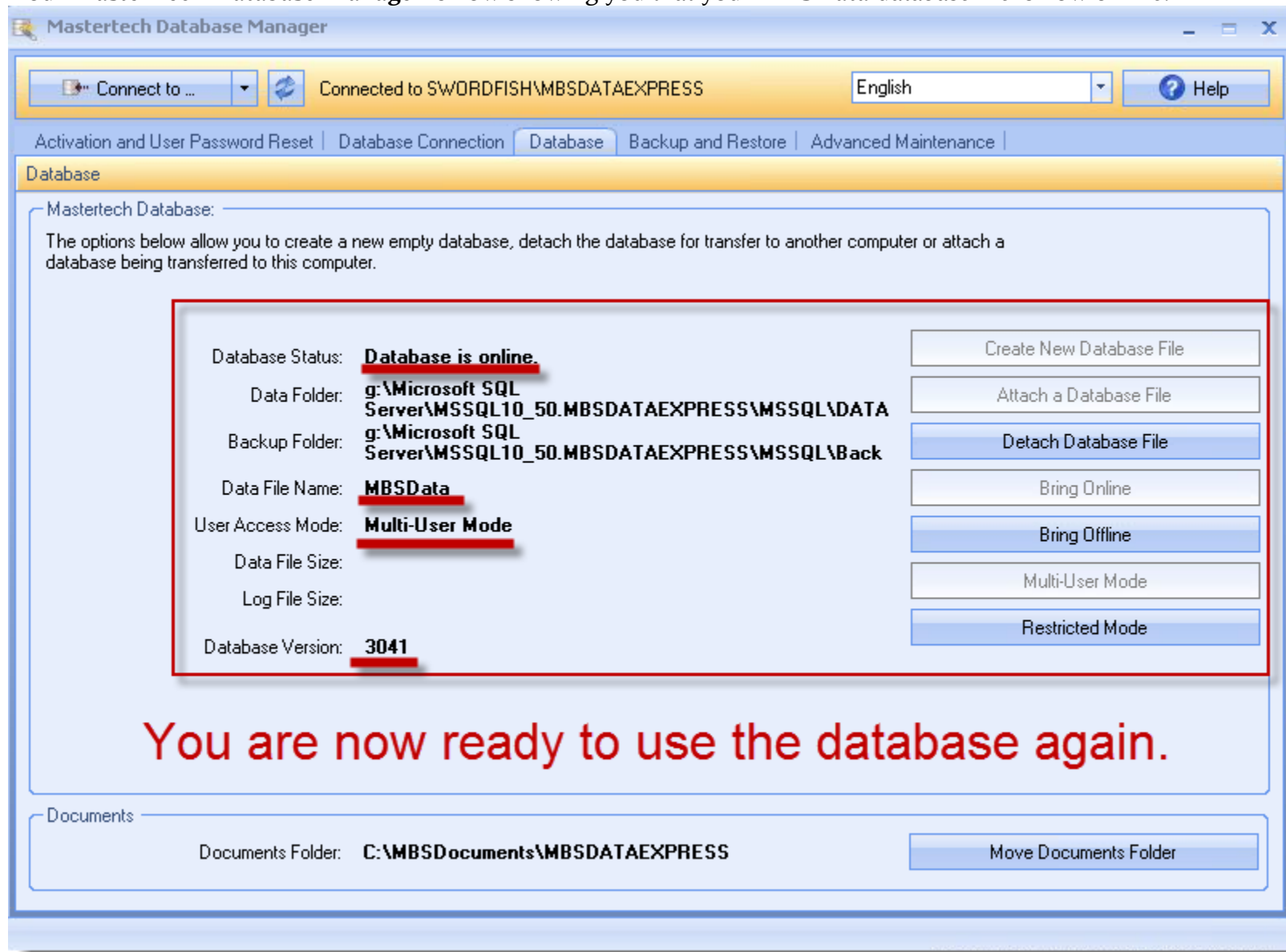
4) In the **Open** window click in the box **Look In** and drill into the existing path of your database folder on this computer. By default the path would be: **C:\Program Files\Microsoft SQL Server\MSSQL10_50.MBSDATAEXPRESS\MSSQL\DATA**. Use the one you've noted in step 1) earlier.



5) In the noted folder location, select the **MBSData** file. Make sure that you see the name of that very file in the box **File name** near the bottom of the **Open** window. Click on the button **Open** to continue.



Your **MasterTech Database Manager** is now showing you that your **MBSData** database file is now online.



You are now ready to use the copy of the database file that you've received from your originator. Open the **MasterTech Management by Statistics 3.0** on your workstation and you will see the graphs and other data from the originator, now on this computer.

Please write me at techsupport@mastertech.com if you have any questions about what I wrote here. – PM, MasterTech Tech Support.